

Welcome to All Saints!

- We hope that this record of our exhibition brings to life our ideas for reordering All Saints.
- We will share a **variety of different displays, drawings and information**, which aim to bring to life the ways that could improve and modernise the church, whilst bringing to life the wonderful Royal Story of All Saints.
- We'd love to hear your feedback, so please use the feedback form to share that with us.
- We **thank you** for your time and commitment to the life of the Village.



What is reordering?

- **'Church reordering** refers to the rearrangement and adaption of churches to accommodate changes in religious practice.'
...Simply put, it is about improving and modernising the building and its decoration to meet the needs of our time.
- All Saint's Church has existed for over 800 years but regularly throughout that time, our **predecessors adapted the building** to meet their needs. We believe that now is the right time for us to do the same; to grow **an inclusive church of all ages**, share our faith, welcoming and **serving the community**.
- We want to make the church building a place which **welcomes everyone** and offers the opportunity for everyone in our community to benefit from it.
- This is a **really exciting step for All Saints**. We want to celebrate and enhance what we've inherited and make the church an accessible, welcoming, inspiring space for worship and for the community. **Getting everyone's feedback and input is key.**



Some 'inspiration' from other churches





19th century engraving of All Saints Church.

**All
Saints**
Kings Langley

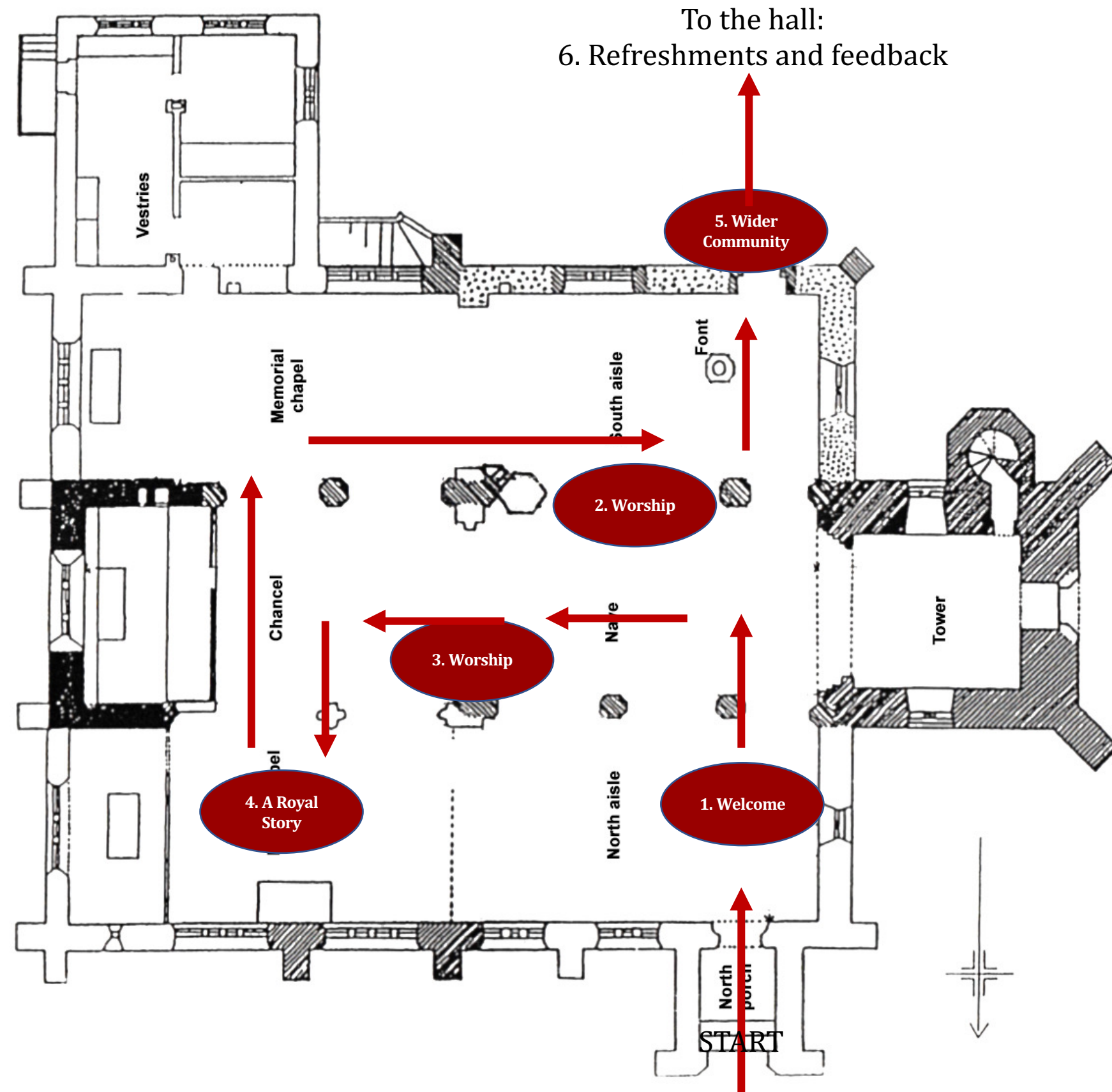


Welcome, Worship and Wider Community

- Our reordering project broadly **covers 3 key themes** and aims to address current constraints around the 'welcome', 'worship' and links to the 'wider community'.
- Whilst addressing the above there is also an opportunity to present far more vividly and effectively the **wonderful royal history** of All Saints, in a way that we hope really make it come alive, for worshippers and visitors alike.
- We will look at these elements and hopefully bring to life our ideas to make the church **more fit for purpose** across these themes.



Navigating the exhibition



Welcome

How was your experience entering the church?

- How **accessible** was the path and steps? If you have mobility issues you will need to use a different door...
- Did you notice how **steep the steps** into the porch are?
- If the **door was closed**, how would that make you feel if you couldn't see inside?
- How welcome did you feel entering the building? Notice how there is **very little space to congregate** or pause. It's a bit cluttered isn't it!
- Does it feel a **bit dark** inside – despite bright lighting, the décor feels a bit drab and in need of a **refresh** doesn't it?



We would **love** our church to be:



All Saints

Kings Langley

Welcome: Improved external access

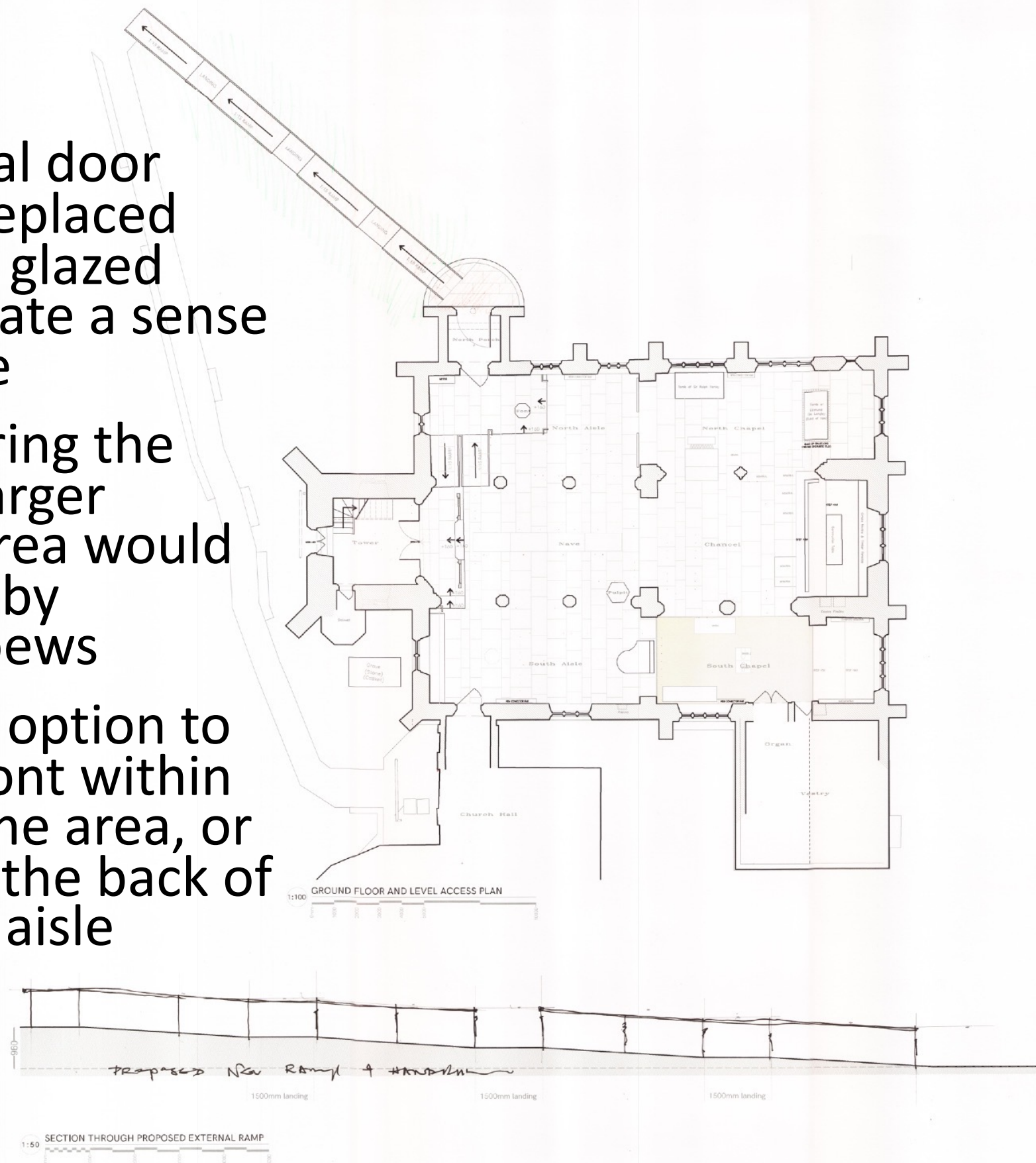
We are exploring a few options to make the entrance accessible:

- A 'serpentine' path that would gradually descend to the level of the church floor
- A more direct path with steeper slopes and flatter sections to descend to the level of the 'welcome' area
- Steps into the church would be removed and a ramp down to the church floor and up to the tower area would be installed



Welcome: Improved sense of arrival and welcome

- The external door would be replaced with a new glazed door to create a sense of welcome
- Upon entering the church, a larger welcome area would be created by removing pews
- There is an option to place the font within this welcome area, or perhaps at the back of the central aisle



Take a seat in one of the pews..

- How is your experience?
 - You'll notice that the **sight lines are not good** from several areas. And that the pews are **uncomfortable!** There is one **fixed layout** for all services.
 - The present layout gives a **distant feel** and doesn't encourage engagement. The pew platforms create **trip hazards** and the décor is very **tired**.
 - Consider a smaller congregation attending a more intimate service: there is no dedicated, well laid out, welcoming space for this.



The current space doesn't meet our worship needs

- **Processions** are a joyful feature of our worship, but the circulation space this requires is **restricted**.
- Flexible seating and fewer barriers will enable **different configurations** for different services, or even for different seasons of the year.
- There is also **no dedicated space for children** to remain in church and engage in their own activities within the service. Not all children want to go out to Sunday school and some Sundays we have 'All Age worship' when the children remain in church.



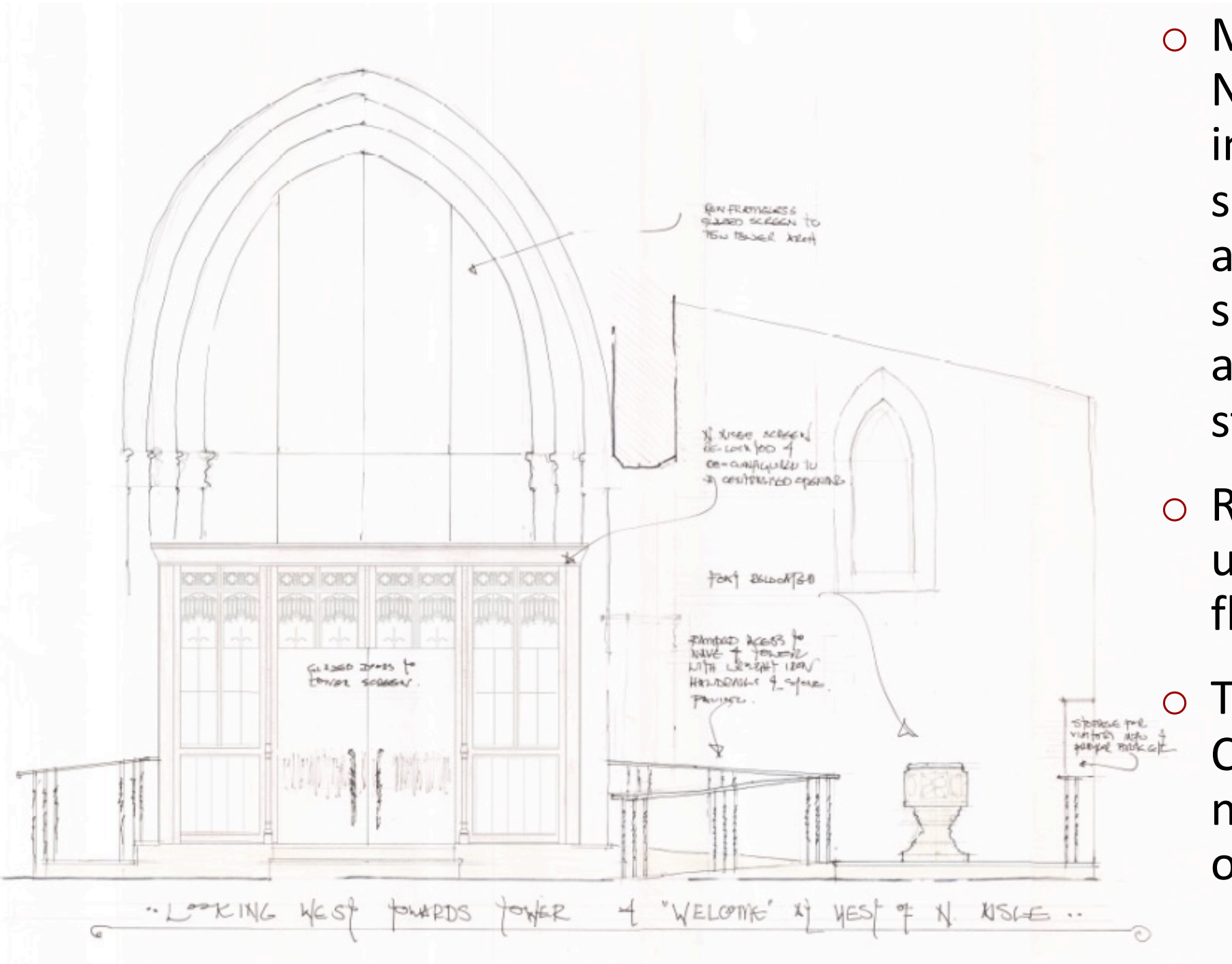
The current space doesn't meet our worship needs

- At present, little happens in the church building throughout the week except our Tiny Tots group. The **inflexible and hazardous nature of the pews** and their platforms is not ideal for the worship element of the session which takes place in the church.
- We have a vision for **more activity and worship** to be taking place in the church during the week, including weekday services. However, as mentioned above, there is no well defined, laid out and welcoming space in which to offer small services, study groups and fellowship.

The current space doesn't meet our worship needs

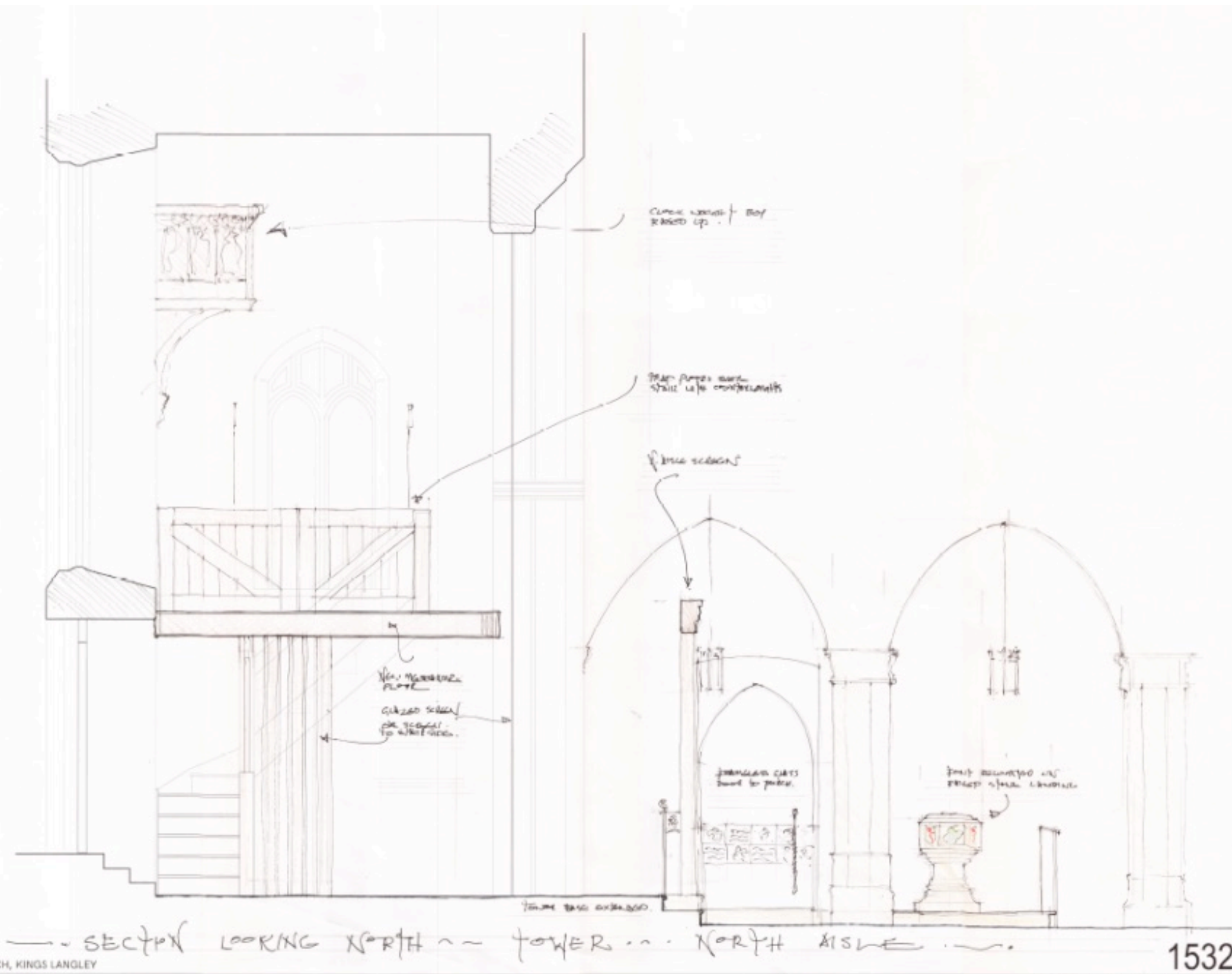
- The current layout also **impacts on baptisms, weddings and funerals**: entrance through the porch is poor for Weddings and funerals, a big part of these services, and the space for the couple, a coffin or a Baptism family under the chancel arch is cramped. The **Font is also in an awkward position** in a corner.
- Solutions we are considering:
 - Removal of pews and replacing with chairs to allow more flexibility and comfort
 - Relocation of font
 - Creation of more intimate spaces for smaller group worship
 - New flooring
 - Heating - more efficient/green
 - Move Longman screen
 - Redecorate, highlighting areas with a colour scheme

Options: Moving the Longman screen



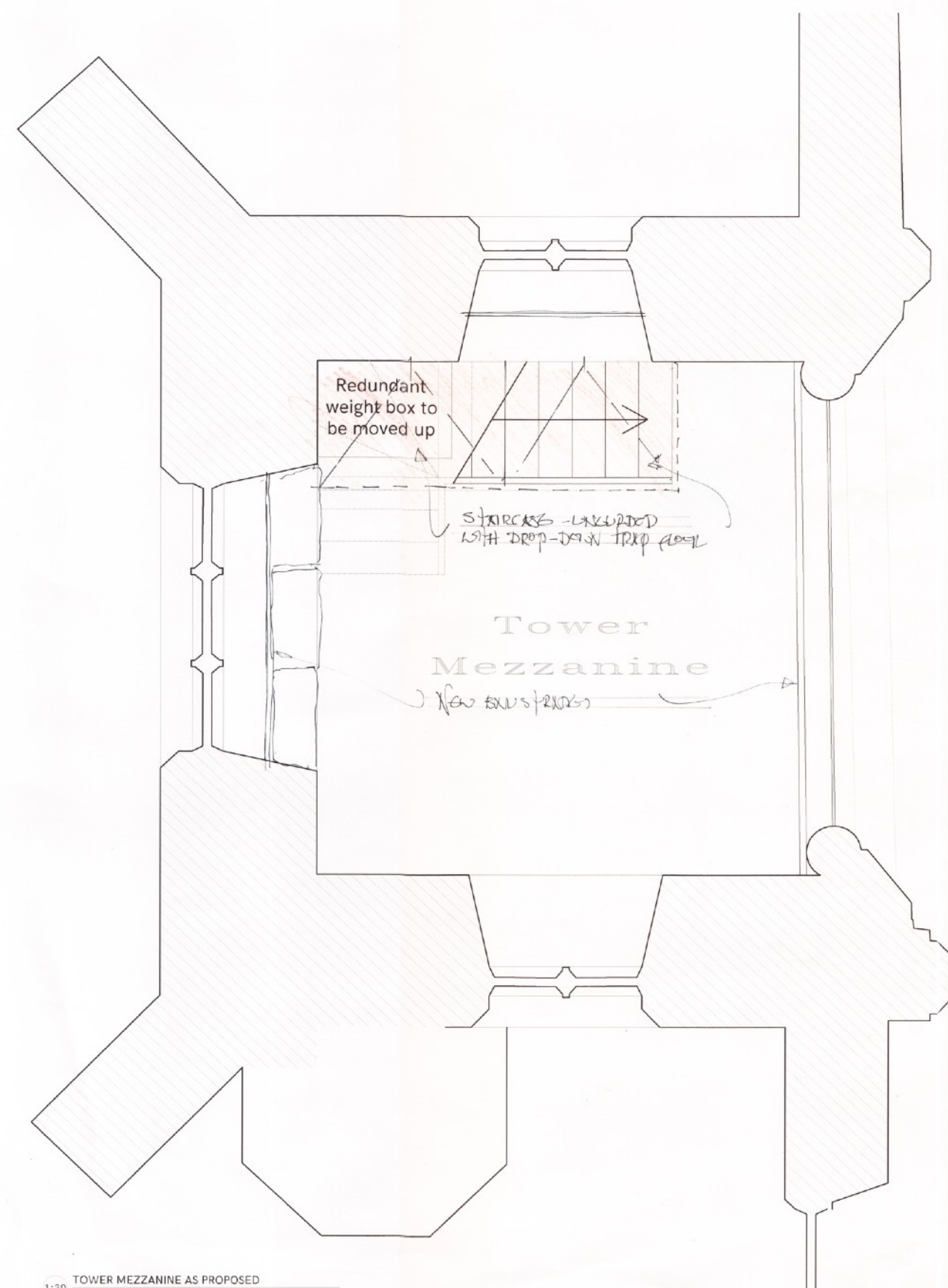
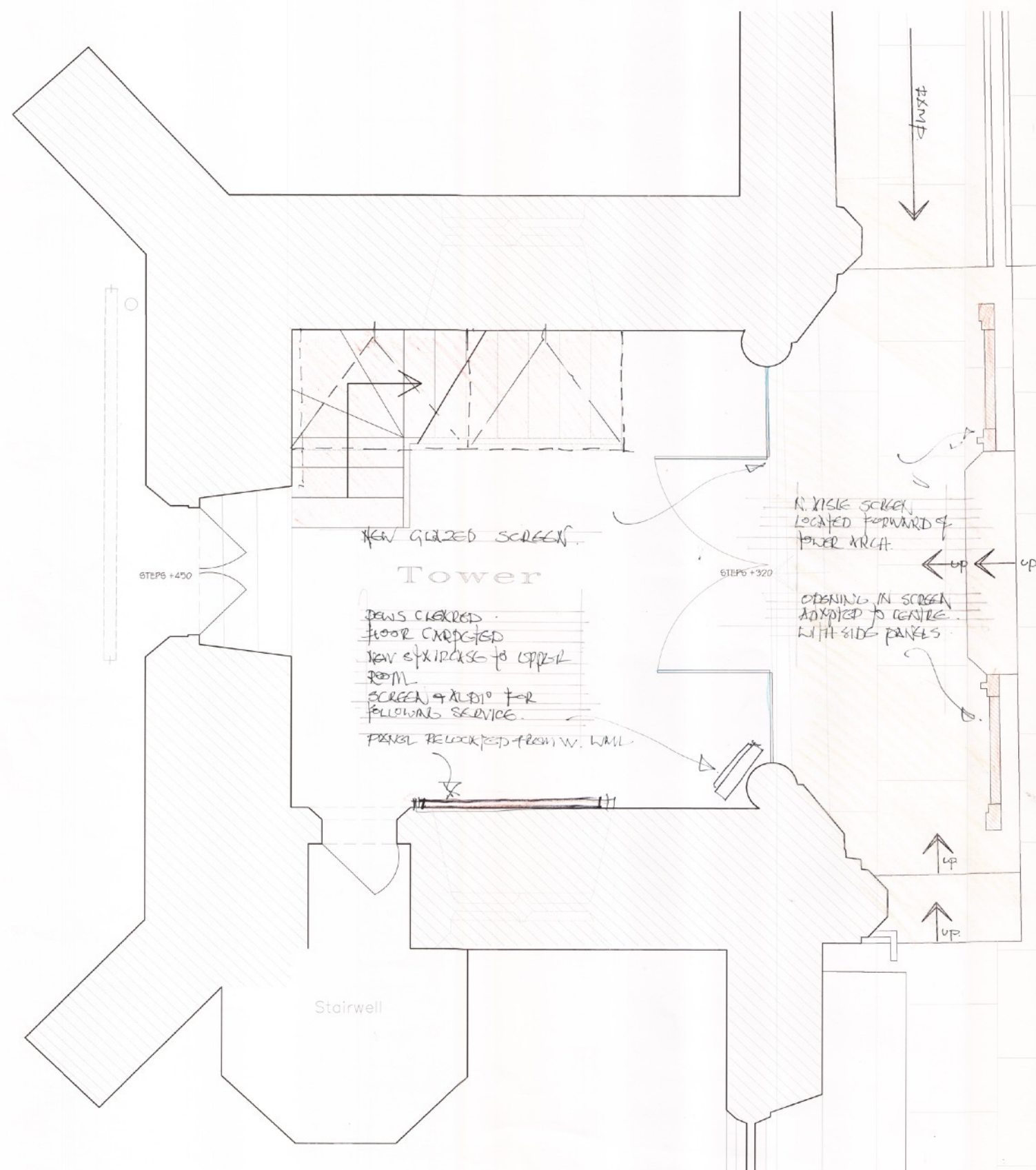
-
- Moving the Longman screen from the North Aisle to the tower and the installation of a huge glass panel to separate the tower section, creating an area that people can 'step out' of services whilst still feeling connected via an AV display. Also can be used as a chair store etc.
 - Ramp to allow access from welcome area up to tower and down to main church floor level.
 - The Tower area can then be used by the Creche or as a break out space for children not wishing to go out to Saints on Sunday or the Creche.
- The Bellringers can then see what is happening in services (e.g. weddings) and will also be seen by the rest of the church family, thus making them more visible and included.

Options: Font, welcome area, and tower

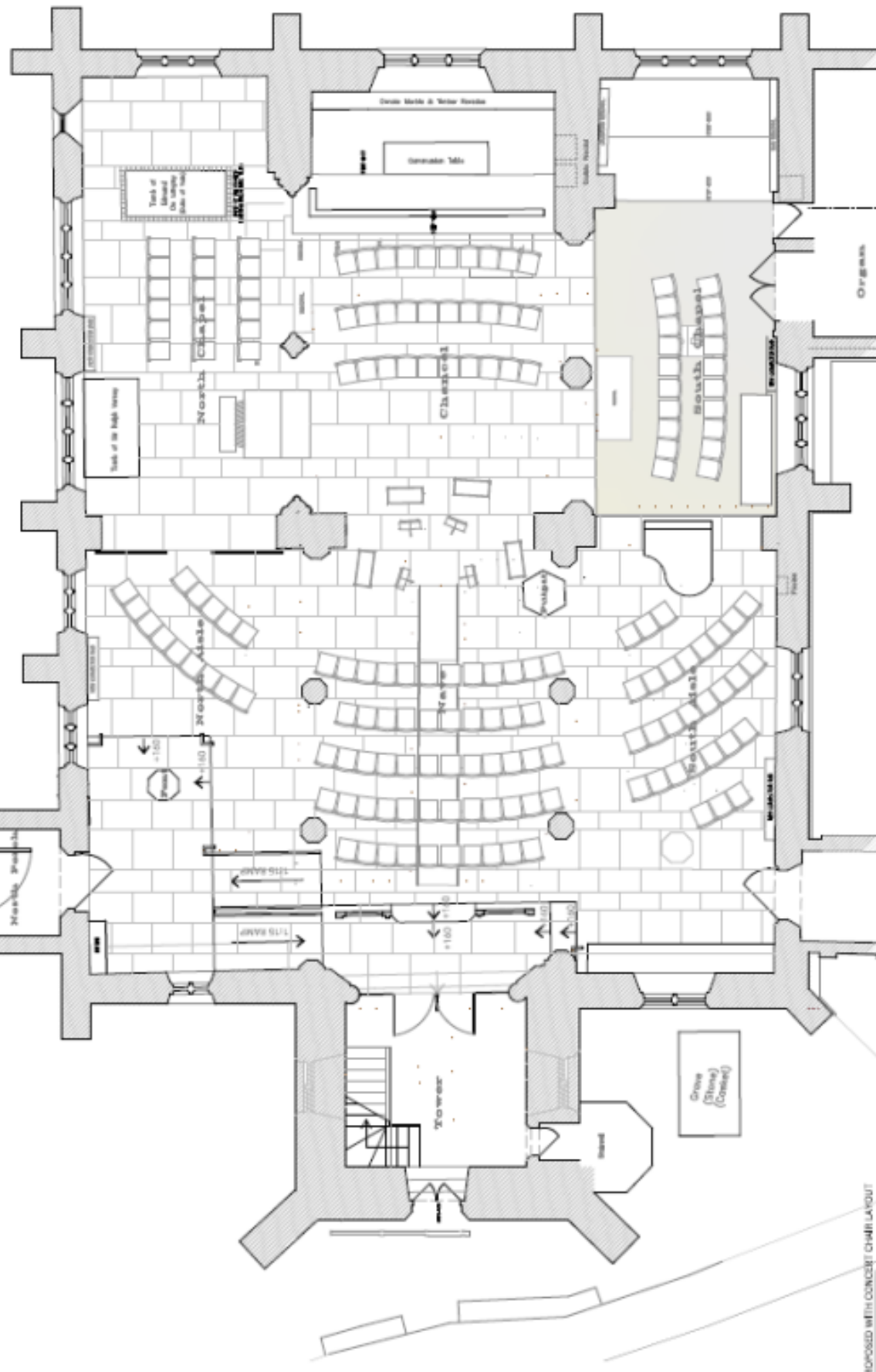


- Move the Font to a more accessible/visible location (welcome area or back centre). This creates an axis through the building from Font to Altar.
- Inclusion of royal symbols on the glass door into the welcome area
- Spiral staircase gives access to the mezzanine level for bell ringers
- The ornate clock weight box would be retained and raised

Options: Tower



Options: Flexible seating arrangements



- Imagine seating laid out in a fan, or in the round, including moveable choir stalls and a moveable altar, or set out so everyone has a view of the High Altar. There would be a feeling of being gathered as the church family.
- Replacing the pews with seats with more comfort would be more inviting for worship too.
- More open space under the chancel arch would create a natural 'stage' to lead services, for couples to be married, for coffins to rest at funerals and for more informal interactions e.g. with children or for presentations.
- Moveable choir stalls could be positioned in a variety of places. We would hope to retain some of the carved woodwork of the present stalls in any new moveable design.

Options: Flexible seating arrangements

By removing the pews and creating flexible space, it gives us the ability to seat flexibly around the church based on different size congregations:

- Different flooring in the south Lady Chapel delineates the area and creates a more intimate worship area.
- Flexible choir stalls could be turned to face the High Altar for some smaller services.
- Ability to hold different kinds of services: with people breaking into small groups; around tables in a café style; in the round; 'choir style' with the seats facing across the church.
- Moveable choir pews would also make holding concerts and other events easier: they could be used by a visiting group or moved into the side chapels by a larger choir or orchestra.
- Uniform flooring and flexible chairs will make children's groups and toddler church activities safer, more accessible and friendlier.

A Royal Story to Tell

- You may not be aware that All Saints is one of very few village churches that enjoys proudly sustained **historic royal connections**.
 - Our relatively humble medieval parish church was, for centuries, granted the rare privilege of being able to **fly the Royal Standard** from its bell tower.
 - The **principal stained glass window** in its Royal Chapel was provided by Queen Victoria and Queen Elizabeth II headed All Saints' subscription list for the recasting of its eight bells in 1958.
- To this day, All Saints remains home to a **royal tomb**!
 - Initially created as a fine heraldically embellished stone casket, to contain the body of King **Richard II 1367-1400**.
 - It was later decided that this tomb should instead hold the remains of the Kings' uncle, Edmund de Langley, the first **Duke of York, 1341-1402** and his wife **Isabel of Castile 1355- 1392**.
 - Edmund himself was the fifth son of Edward III and brother to both John of Gaunt and the Black Prince.





Stained Glass Window in Royal Chapel



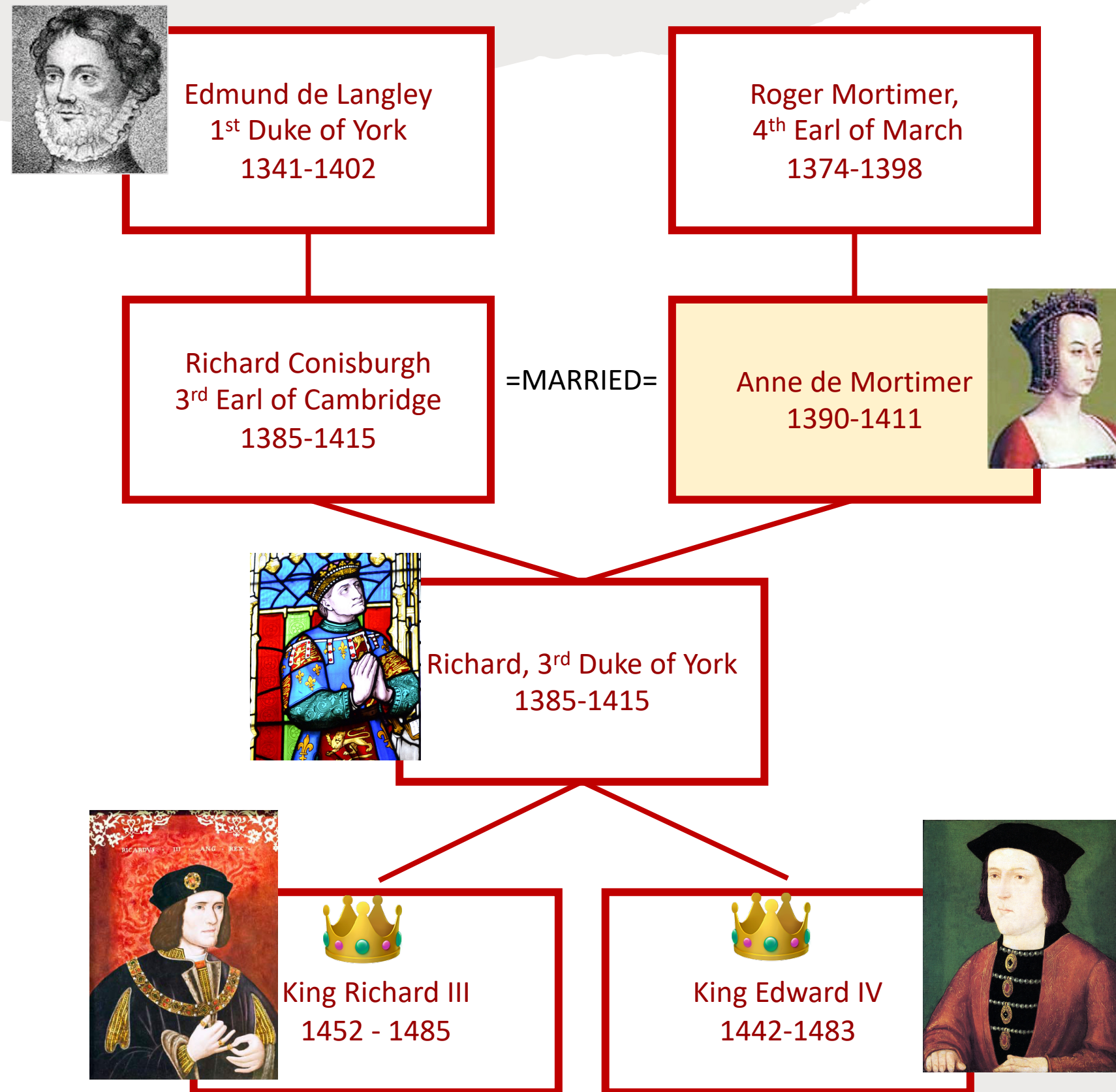
The Royal Standard

The Royal Tomb has a **fascinating story..**

- In Victorian times, the **tomb was moved** during changes made to the interior layout of the church.
- At this point, they discovered that the tomb also contains the mysterious **third body of a young woman** in a separate lead encasement, long assumed by eminent historians, as most likely to be **Anne de Mortimer**, Countess of Cambridge 1390-1411.
- If these are indeed the remains of Anne de Mortimer, this adds hugely to the overall significance of our royal tomb - bearing in mind, during her tragically short twenty-year life span, this young woman managed to bring to bear her **extraordinary genetic influence** on the entire royal Plantagenet dynasty.



Anne de Mortimer was posthumously Grandmother to two monarchs



Extraordinarily, it has been discovered that the bloodline of Carole Middleton (mother of Catherine, Duchess of Cambridge) links directly back to Anne de Mortimer via her great-great-grandmother!



The royal connections within the church are a powerful **reminder** of the **royal presence** in Kings Langley

- In 1296 the Feast of All Saints and All Souls is recorded as being celebrated by Edward I here.
- Later in 1324, his successor, Edward II offered seven shillings at the Adoration of the Cross on Easter Day at All Saints.
- **A splendid Royal Palace** once stood on the Steiner School site at the top of Langley Hill, first established in 1278 by Eleanor of Castile (wife of Edward I), together with a Dominican Friary, said to be equal in pomp and splendor to Westminster Abbey!
- The Palace was prominent for over 150 years and features in many key historical moments. It was sadly **destroyed by a fire** in 1431
- The **Dominican Friary Church** was the **original home of our Royal Tomb**, prior to its transfer to All Saints in 1574 following the destruction of Henry VIII's Reformation.
- The Dominican Friary, its church and associated buildings were leveled, bar its Locutorium which **remains today** and has become **known as the Priory**.

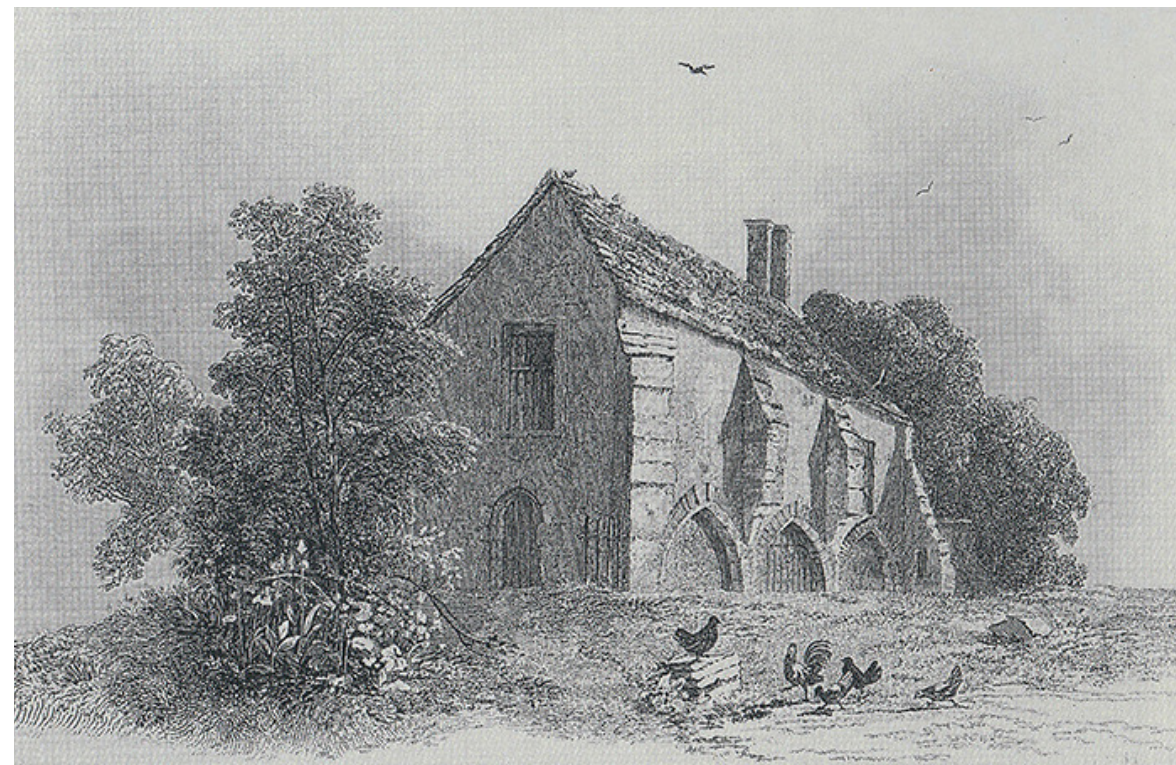




The Garden of the Royal Palace



The Royal Palace



The Dominican Friary

Our **unique** and **historic** story is one we are determined to bring fully back to life for many visitors!

- The reordering project bring an **opportunity to re-present the story** in an engaging way **for local residents and the many visitors**, already attracted here from all over the world.
 - A mixture of new fitments, cabinets and wall mountings will also be installed to allow for the adjacent, clear and secure display of other exceptional associated historic royal artifacts.
 - Very fine and **rare examples of tiled flooring**, thought to be from the Dominican Friary Church, which are currently poorly displayed in an obscured location. As well as possibly the **finer ledger stones and brasses**, belonging to the church.
 - We hope to provide a new home for the **engraved stone slab**, currently hidden away and set into the floor – this almost certainly formed the original top of the royal tomb.
 - The current royal tomb top is believed to be an **altar stone, salvaged from the Friary Church itself**.
 - There are many **other spectacular items** from the excavation on the Palace site in 1974-76 which we hope to display alongside the tomb (e.g. large stones belonging to a **royal fireplace with medieval graffiti** scratched into the stone over 700 years ago!)



Some examples of artefacts



Fireplace stone from the Palace excavation



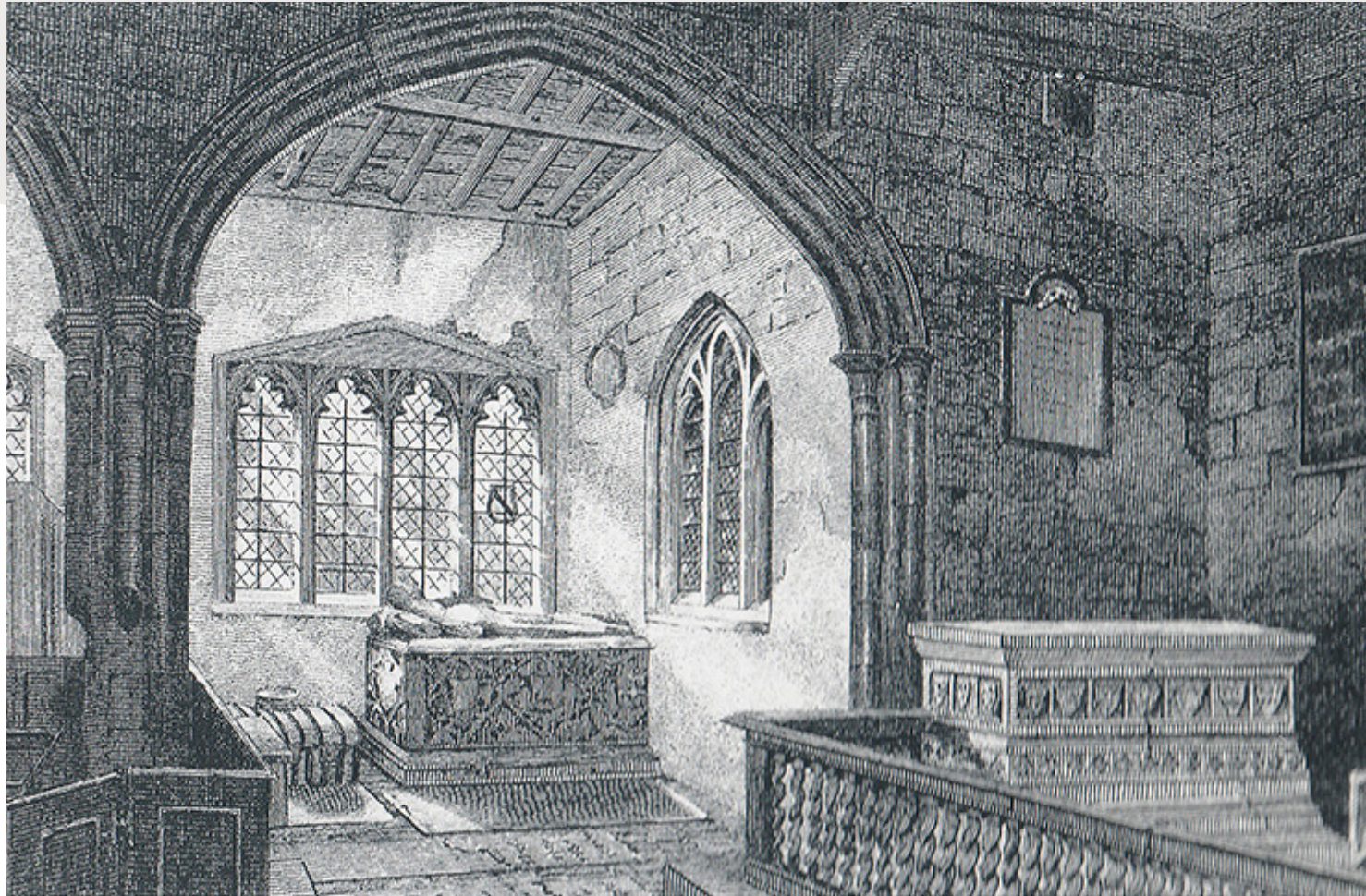
Encaustic tiles thought to be from the Friary Church



Floor fragment from the royal wine cellar excavation



Some examples of artefacts



Original position of Royal Tomb



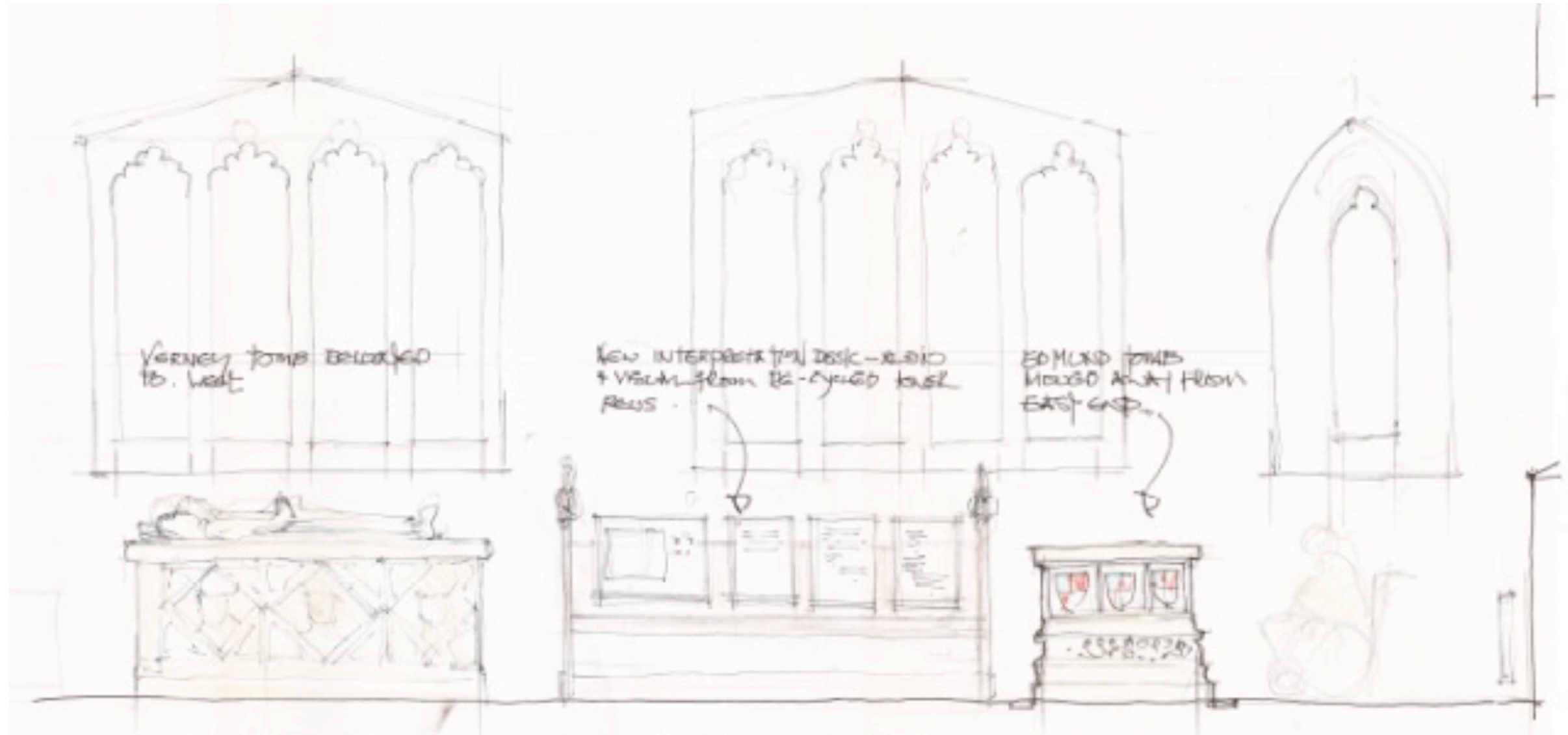
Heraldic Shields



The Original Cover of the Royal Tomb

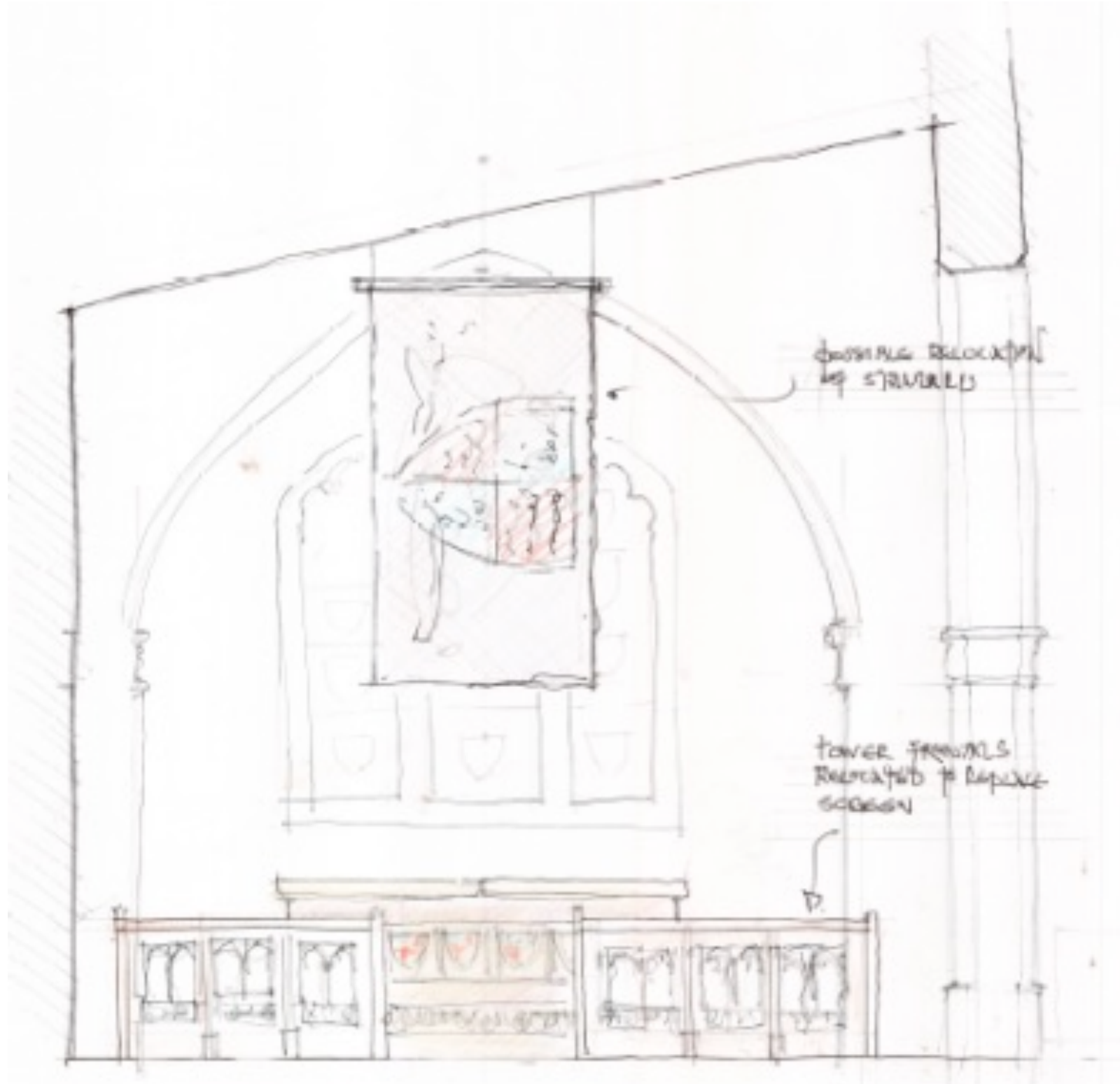


The Royal Chapel: Looking North



- Restoration of the tombs and surrounding artefacts – for example, using the encaustic tiles around the base of the tomb.
- Verney Tomb relocated west
- New interactive information display, using recycled tower pews
- Edmund tomb moved away from the east end for improved access – can also be used as an altar

Royal Chapel: Looking East



- Clear sight lines – the splendid tomb is visible as soon as you enter the church
- Tower frontals relocated to replace the Longman screen – improved visibility
- Frontals installed on metal poles to allow them to be removed for flexible space
- Royal Standard on display (this will look to be restored)

Reordering for the wider community

We hope to make the church **more suitable for use by the wider village community**:

- Improved accessibility so everyone can come in through the same door, and **no-one should feel excluded**
- A **flexible space** for different uses, complementing rather than competing with other village spaces
 - Different seating layouts, or no seating
 - An impressive and historic atmosphere
- **Attracting more users**
 - Church based: Tiny Tots, young people's groups, music, prayer
 - Non-church based: uniformed organisations, education, leisure, arts



Reordering for the wider community

Additional uses could include:

- **Community Foodbank** - a more tailored specific space
- **Weddings** – could the church provide the venue for the wedding party as well as the service?
- **Concerts, recitals, and talks** – more comfortable for performer and audience, improved visibility, and better acoustics than today
- **Schools** – can All Saints provide a venue for more school educational or artistic activities?

Finally, the **church hall/offices/storage** aren't in scope for the main project but we'd be interested to hear your thoughts on how it could be improved.



We'd love to know your thoughts!

Overall impression

How would you
like to see the
church used?

Any highlights?

Anything that
you'd change?

Any concerns?

Any further
questions?

